



Date: 07 April 2022

RE: Project AIM: Stage 3 Eastern Apron

Dear Archerfield Airport Community Member

We are writing in relation to Project AIM Stage 3 works, which are anticipated to commence on the 26th of April 2022 and to be completed by the 30th of September 2022, subject to weather or work-related contingencies. The works will be undertaken in five (5) phases from Monday to Friday between 6:30 am and 5:30 pm.

During the works, the following is expected:

Eastern Apron	Disruptions to aircraft operations on the Eastern Apron are expected to occur during these works, including access to hangars.
Taxiway Hotel	Taxiway H, south of TWY E/H intersection and north of TWY B/B2/H intersection, will be unavailable.
Runway 28R run-up bay & Jet Turbine Parking	RWY 28R run-up bay will be relocated to the northern side of TWY B1. Code A aircraft will be required to taxi via TWY E, TWY B, and TWY B1. Aircraft are to face north or north-west when running the engines to avoid propwash to the works area. The Jet Turbine will be relocated to the Northern Apron.
Taxiway B/B2/H/B1 intersection & Taxiway E/H intersection	Taxiway intersections will be restricted to Code B aircraft with a maximum wingspan of 18 m and wheelbase of 5 m (B350 King Air or similar).
Taxiway B1	TWY B1 will be limited to Code A aircraft only, except Code B aircraft requiring access to Hangar 007. TWY B1 may be closed during later phases of the works.
Runway 10L/28R	Runway 10L/28R safety strip will be reduced to 90 m in width. Construction vehicles will infringe Runway 10L/28R transitional surface. RWY10L/28R may be closed due to penetration into the OLS by construction vehicles during later phases of the works (available on recall).

Please refer to the latest NOTAMs relating to Stage 3 works.

Should you have any questions, or require further information, please do not hesitate to contact us.

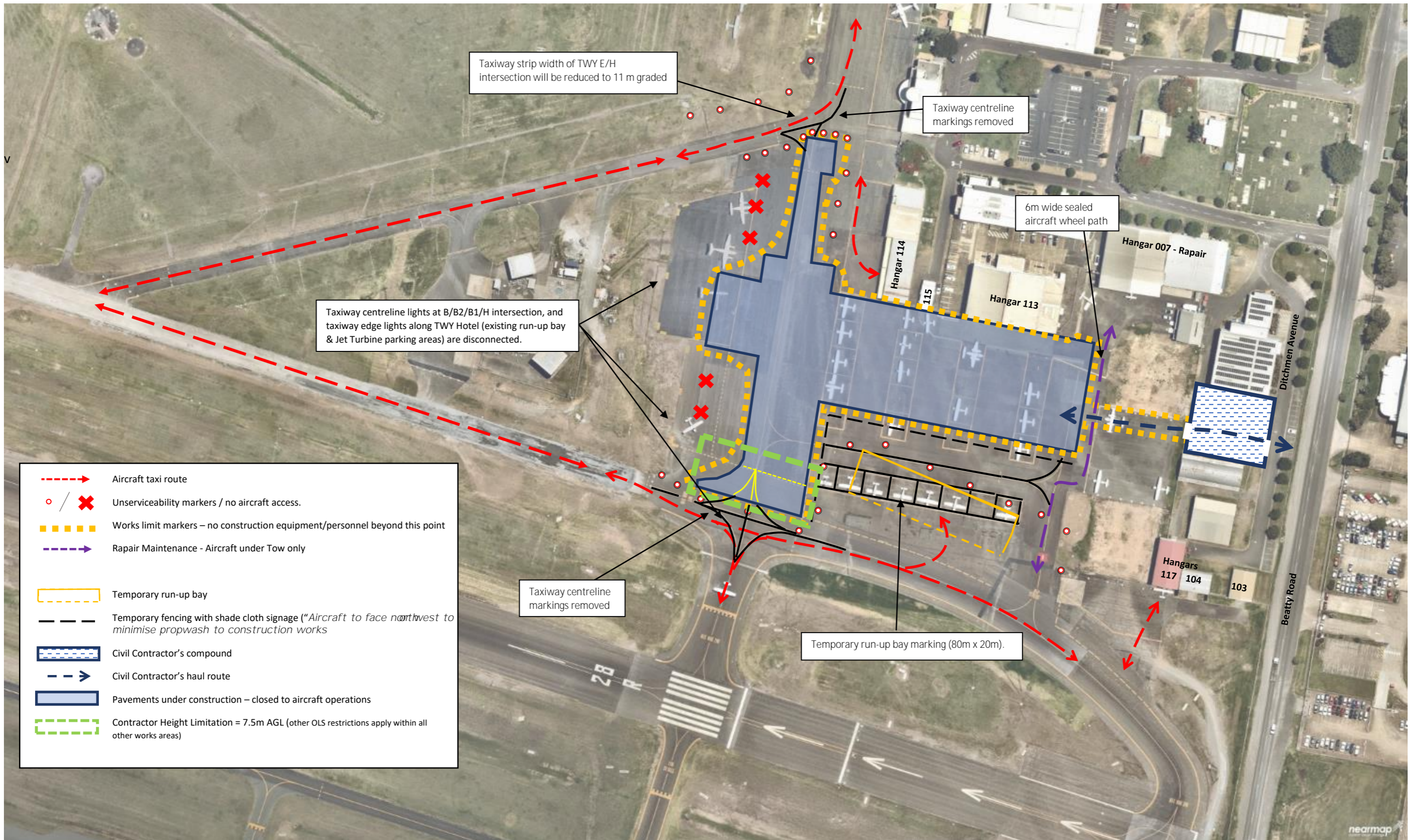
Kind regards,

Rachel Kee

Airport Compliance Officer

PROJECT AIM: STAGE 3 WORKS

Proposed Construction Phasing Plan - Phase 1 & 2



PROJECT AIM: STAGE 3 WORKS

Proposed Construction Phasing Plan - Phase 3 & 4



PROJECT AIM: STAGE 3 WORKS

Proposed Construction Phasing Plan - Phase 5

