

### Helicopter procedures

- Adopt and maintain best rate of climb to minimise noise over residential areas as soon as possible after takeoff.
- Use correct takeoff and landing areas including run up bays.
- Maintain correct track after takeoff.
- Always look ahead and select the least noise-sensitive route.
- Fly above 500 feet and try to be above 1,000 feet when flying over noise-sensitive areas.
- Restrict low level training to designated and approved areas.
- Avoid hovering and low flying above residential areas.
- Keep turns and tight manoeuvres to a minimum when above residential areas.
- Avoid rotor blade slap noise wherever possible.
- Where possible, use descent profiles with low-power and low-noise operations.



### Aircraft ground noise

Fly Neighbourly also focuses on aircraft ground noise which might come from engine testing and aircraft run ups prior to takeoff. Archerfield Airport has a number of maintenance organisations required to conduct engine testing to ascertain that an engine is running correctly.

- Conduct engine testing at purpose-built test pads.
- Check that noise from your activities complies with levels set out in the Airports (Environmental Protection) Regulations 1997.
- Ensure your Site Environmental Management Plan is in place for aircraft maintenance operations and that it addresses and effectively manages all emissions including noise.

### Fly Neighbourly – a new part of our culture

Archerfield Airport's Fly Neighbourly Program will be part of our Conditions of Use, referred to in ERSAs, published on our website, distributed to pilots, tenants and the community, and embedded into our aviation culture.

Safety is paramount at Archerfield Airport. There may be times when weather, air traffic procedures and instructions and safe separation distance between aircraft result in Fly Neighbourly not being able to be followed.

Wind conditions are an important factor in aircraft landing and takeoff, depending on the aircraft size and power. Where possible, pilots will use runways that are the least noise sensitive. Airservices Australia (Airport Control Tower) will determine which runways are to be used during tower hours of operation based on wind conditions, aircraft type, runway conditions and ultimately, Safety.



### Noise feedback

To provide feedback about aircraft noise, contact Airservices Australia by phone 1800 802 584 or visit the Australian Government's aviation information website at [www.aviationcomplaints.gov.au](http://www.aviationcomplaints.gov.au).

For feedback about airport ground noise, advise AAC by phone (07 3275 8000) or email ([aac@archerfieldairport.com.au](mailto:aac@archerfieldairport.com.au)).



# FLY NEIGHBOURLY

It's in everybody's interest!

*Working with our communities to foster 'good neighbour relations'*

## Archerfield Airport's Fly Neighbourly Program

Fly Neighbourly is a voluntary code of practice developed by Archerfield Airport Corporation (AAC) in partnership with airport operators, community representatives, residents and other aviation stakeholders wanting to reduce aircraft disturbances around our airport. The program encourages 'good manners' by everyone who uses the airport, and aims to reduce the noise impact on our business and residential neighbours. While noise is always associated with airport operations, Fly Neighbourly identifies key noise-sensitive areas near the airport and promotes practical ways that airport operators can minimise the noise generated by their activities.

Managing aircraft noise is a complex issue and the impact of aircraft noise cannot be underestimated. To some people, it is barely noticeable and/or may be considered exciting, yet to others the impact ranges from annoyance, some effect on peace and quiet, to concern and fear. As an airport, we will always generate aircraft noise, however we will endeavour to make everyone aware of Fly Neighbourly best practice and work with our neighbours.

Fly Neighbourly is one way for residents to gain a better understanding of the source and background to aircraft noise, flight paths and the highest level of safety practised by pilots. The program also highlights to pilots the impact of low level flying, aircraft noise effects and the location of residential areas near Archerfield Airport. The objective of Fly Neighbourly is to create and foster lasting solutions to minimise the impact on neighbouring communities.

AAC encourages all operators to adopt this airport-wide commitment to developing 'good neighbour' relations.

### FLY NEIGHBOURLY PRINCIPLES

1. Be aware of, and avoid, noise-sensitive areas where possible.
2. Unless subject to ATC procedures or instructions, aircraft should follow high ambient noise routes such as railway lines and highways, and unpopulated routes such as waterways.
3. Vary your flight path where possible, especially during circuit training and when arriving and departing, to avoid nearby residential areas, schools and hospitals; and try to fly above 1,000 feet when ATC procedures permit or as allowed by ATC.
4. Restrict low level training to designated and approved areas.
5. When operating near noise-sensitive areas maintain appropriate fly-over altitude, reduce speed, use low noise speed/descent settings and use high takeoff/descent profiles.
6. Adopt best rates of climb to minimise noise over residential areas as soon as possible after takeoff.
7. Maintain correct track after takeoff.
8. Reduce engine revs as soon as possible.
9. Follow designated flight paths.
10. On Anzac Day please restrict circuit training to commence after 11am.
11. For rotary wing aircraft, restrict low level training to designated and approved areas.
12. Be aware that some surrounding residential areas are on higher ground than the airport therefore your aircraft is closer to houses.
13. Avoid where possible very early morning (in the dark) circuit training.



### How we can make a difference in our community

Archerfield Airport on Brisbane's south-side is 11 km from the CBD. It is surrounded by mainly industrial and residential areas, and sits at 65 feet above seal level. Some residential areas, particularly Acacia Ridge and Oxley, are on higher ground and up to 200 feet above sea level. Pilots flying in and out of Archerfield Airport should be aware of these nearby noise-sensitive areas and their difference in altitudes.

Aircraft noise will always arise as part of airport operations, and while modern aircraft are becoming quieter, considerable ongoing attention is required to manage the noise associated with an airport. If you use Archerfield Airport, please observe regulated noise-related procedures and adopt additional practices, where possible and safe, to reduce aircraft noise.

Please support the guidelines in Fly Neighbourly, educate airport users and be sensitive to the community.

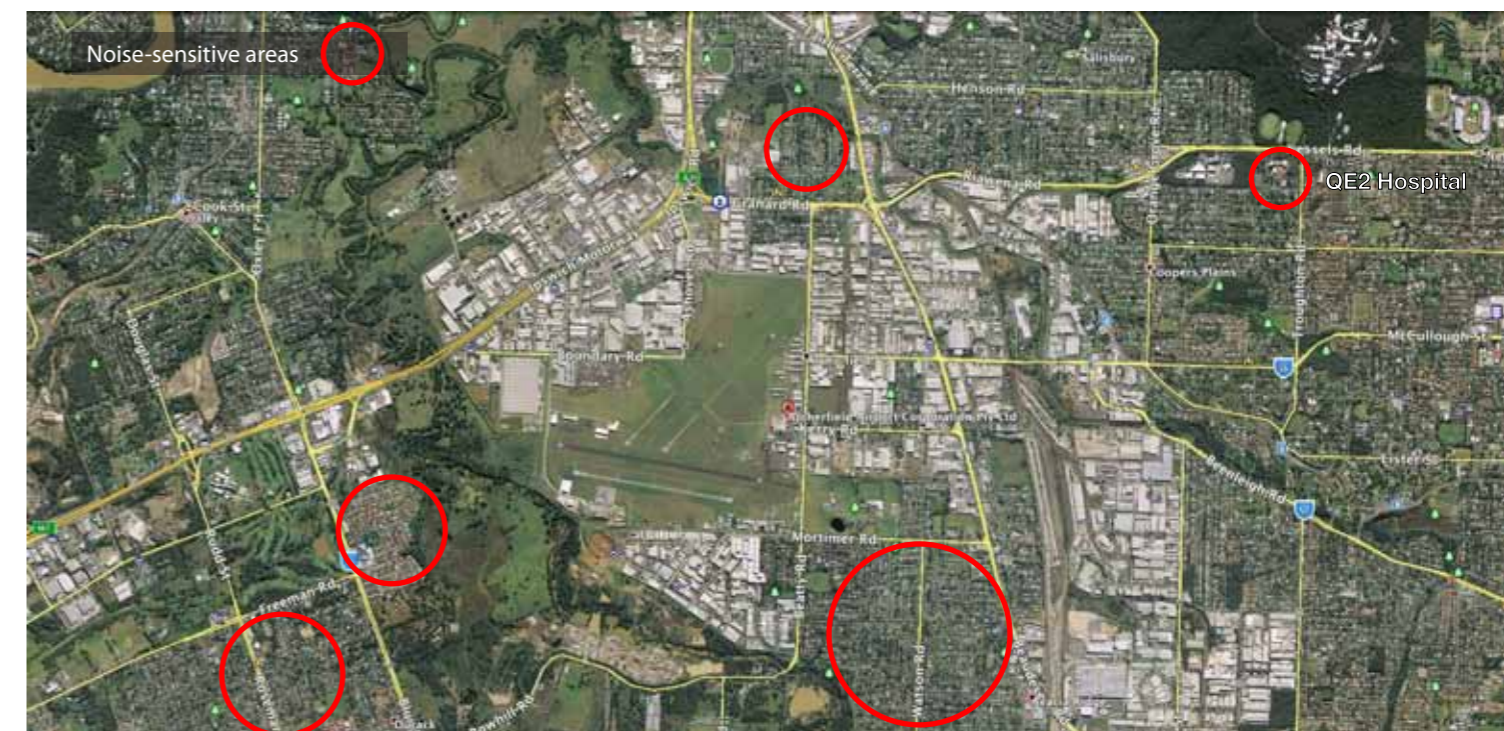
## Flying Neighbourly – every flight

Archerfield Airport is Brisbane's metropolitan secondary and Queensland's premier general aviation airport with a proud history and vibrant business and community hub. Operating since 1930, the airport retains important historical links such as the distinctive art deco Terminal, Hangars 5 and 6 (past terminus for Qantas, ANA, Ansett and TAA), God's Acre pioneer cemetery and the Royal Queensland Aero Club.

Archerfield Airport operates 24/7/365 to cater for corporate/business/private, charter, flight training, joy flights, maintenance and emergency response services for fixed wing and rotary aircraft. The airport has four runways and numerous taxiways, and the control tower operates from 7am to 5pm daily. Archerfield is 'home' to more than 200 aircraft, 80 businesses, and hundreds of employees, visitors and airport users. It is a key gateway for general aviation and a driver of economic, social and community direction.

We regularly communicate with our tenants and residents about noise generation and its impact on the community; and we take a real and concerned interest in ensuring that every effort is taken to reduce impacts. Pilots and aircraft operating at Archerfield Airport must comply with a range of regulations and procedures stipulated by Archerfield Airport Corporation, Airservices Australia and the Civil Aviation Safety Authority (CASA). These include Archerfield Airport's Conditions of Use, En Route Supplement Australia (ERSA) and CASA's Visual Pilot Guide. Noise abatement procedures and this Fly Neighbourly Program form part of these requirements.

We praise and admire the many pilots who currently 'fly neighbourly' and expect the wider aviation community to embrace these procedures and promote Fly Neighbourly to other pilots.



### Fixed wing aircraft procedures

- When arriving and departing the airport be aware of, and avoid flying over residential areas.
- Adopt and maintain best rate of climb as soon as possible after takeoff.
- Maintain correct tracks and altitude, and follow designated flight paths, noting some nearby rising 'residential' grounds.
- Conduct turns that have the least impact on residential areas, including delay, steep and low level turns.
- At all times comply with requirements set out in the Air Navigation Regulations, DAP (Departure Approach Procedures) and ERSA.
- Avoid lengthy engine run ups and reduce engine revs after takeoff or as soon as possible.
- Use sufficient runway length and as soon as possible climb to height, then reduce power to cruise settings.
- Noisier aircraft have greater impact so refrain from low flying, steep turns and operations over residential areas.
- Be aware of, and where possible avoid, flying over residential areas, schools and hospitals. Instead, use flight paths over highways, bushland, railway lines, water and other less populated areas.
- Consider using reduced power settings if flight must be lower.
- Include noise management information, including the Fly Neighbourly Program, in pilot training and familiarisation.