

**DO YOU HAVE AN ...**

**AIRCRAFT SAFETY CONCERN?**

If you have a concern about aircraft operating in an unsafe manner, you can advise and contact the Civil Aviation Safety Authority (CASA) on 131 757 (business hours) or visit CASA's website.

**AIRCRAFT NOISE CONCERN?**

If you have a complaint or inquiry about aircraft noise, you can address it with Airservices Australia through the Noise Complaints and Information Service (NCIS) online or by phone at 1800 802 584 (business hours).

**AIRCRAFT GROUND NOISE CONCERN?**

If you have a concern about aircraft ground noise, please advise AAC by phone at 07 3275 8000 (business hours) or by email (aac@archerfieldairport.com.au)

It is important to have the clear details regarding the incident/issue.



# FLY NEIGHBOURLY PROGRAM

Fly Neighbourly is a voluntary code of practice developed by Archerfield Airport Corporation (AAC) in partnership with airport operators, community representatives, residents and other aviation stakeholders wanting to reduce aircraft disturbances around our airport. The program encourages 'good manners' by everyone who uses the airport, and aims to reduce the noise impact on our business and residential neighbours. Archerfield Airport is Brisbane's metropolitan and Queensland's premier general aviation airport. Operating since 1931, the airport retains important historical links with Brisbane's early pioneering days, operations as an international airport and its pivotal role in WWII, all on display for the general public in The History Room located in the 1940's Art Deco-style Terminal Building

**PURPOSE**

- to create and foster lasting solutions to minimise the impact on neighbouring communities.

**FOR PILOTS**

- to understand the impact of low level flying, aircraft noise effects and the location of residential areas near Archerfield Airport.

**FOR COMMUNITY**

- to gain a better understanding of the source and background to aircraft noise, flight paths and the highest level of safety practised by pilots.

# FLY NEIGHBOURLY



Archerfield AIRPORT



**It's in everybody's interest!**

**Working with our communities to foster 'good neighbour' relations**

A voluntary Code of Practice by pilots at Archerfield Airport

Archerfield Airport Corporation  
Top Floor, Terminal Building  
PO BOX 747, Archerfield QLD 4108  
P: 07 3275 8000  
E: aac@archerfieldairport.com.au



## FLYING NEIGHBOURLY AT EVERY FLIGHT

We communicate with our tenants and residents about noise generation and its impact on the community; and we take a real interest in ensuring that every effort is taken to reduce impacts.

Pilots and aircraft operating at Archerfield Airport must comply with a range of regulations and procedures stipulated by Archerfield Airport Corporation, Airservices Australia and the Civil Aviation Safety Authority (CASA). These include Archerfield Airport's Conditions of Use, En Route Supplement Australia (ERSA) and CASA's Visual Pilot Guide.



Safety is paramount at Archerfield Airport and must be maintained at all times. Weather, air traffic procedures or instructions and safe separation distance between aircraft may at times result in the Fly Neighbourly not being able to be followed.

## A PART OF OUR CULTURE

Archerfield Airport's Fly Neighbourly Program will be referred to in ERSA, published on our website, distributed to pilots, tenants and the community, and embedded into our aviation culture.

We appreciate pilots who currently 'fly neighbourly' and encourage the wider aviation community to embrace these procedures.

Note: Archerfield Airport operates 24 hours a day. Non-training aircraft are not subject to these training limits and may still need to fly around a circuit to depart or land safely.

## FLY NEIGHBOURLY PRINCIPLES

- Be aware of, and avoid, noise-sensitive areas where possible.
- If operating near noise-sensitive areas, try to fly above 1000 FT subject to ATC procedures, maintain operating altitude, reduce engine power, use low-powered descent settings and adopt optimum rates of climb as soon as practicable after take-off (subject to aircraft performance).
- Unless subject to ATC procedures or instructions, aircraft should vary flight path and follow high ambient noise routes such as railway lines and highways, and unpopulated routes such as waterways.
- Maintain published flight paths and follow ATC cleared headings after take-off and when conducting a final approach.
- Avoid low flying where possible, especially over residential areas, hospitals and schools. Restrict low level training to designated and approved areas.
- Avoid prolonged engine runs or high engine power.
- For rotary-wing aircraft, restrict low level training to designated and approved areas.
- Be aware that some surrounding residential areas are on higher ground than the airport; therefore your aircraft is closer to houses.

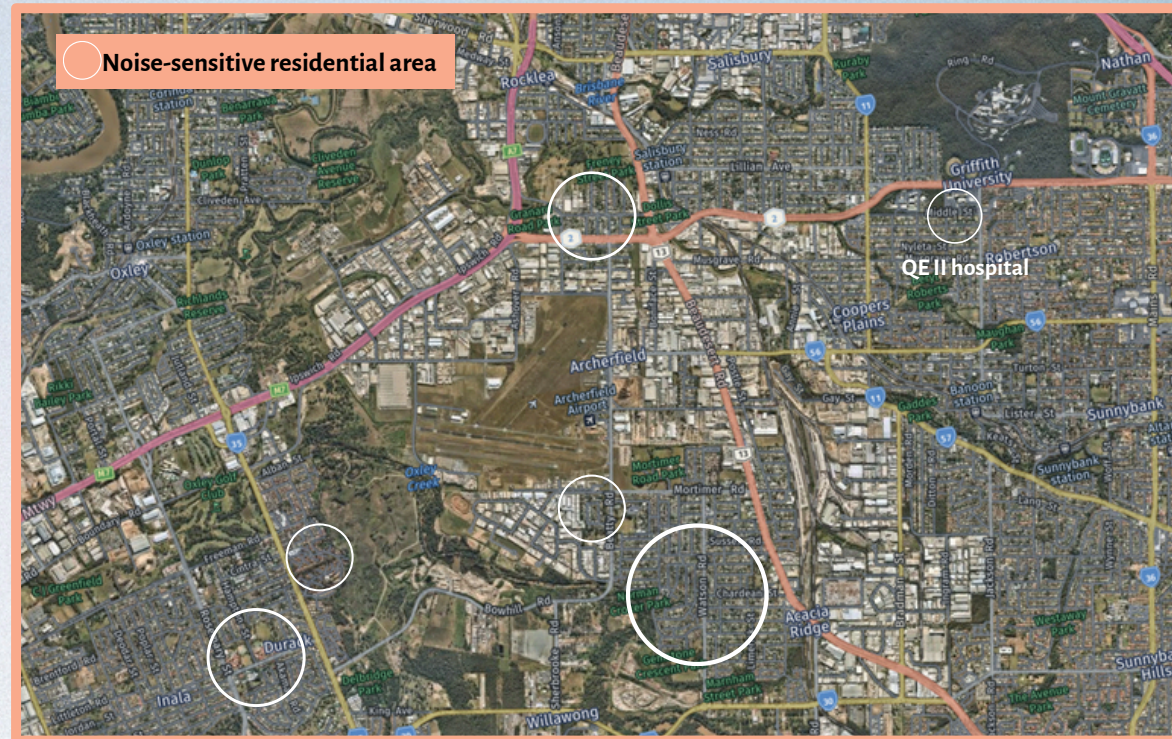
## FIXED-WING AIRCRAFT PROCEDURES

In addition to the Fly Neighbourly principles, pilots endeavour to

- conduct turns that have the least impact on residential areas, including delay, steep and low level turns.
- use full runway length for take-off (where possible) and increase the rate of climb to the nominated altitude, then reduce power to cruise settings.

## ROTARY-WING AIRCRAFT PROCEDURES

- Always look ahead and select the least noise-sensitive route.
- Fly above 500 FT and try to be above 1,000 FT when flying over noise-sensitive areas.
- Avoid hovering and low flying above residential areas.
- Avoid rotor blade slap noise wherever possible.



## GENERAL CIRCUIT OPERATING HOURS

Monday to Friday  
7:00 am - 5:00 pm

Christmas & New Year's Day  
No circuit training

Anzac Day  
Restricted circuit training before dawn and between 10am - 12pm

Remembrance Day  
Restricted circuit training